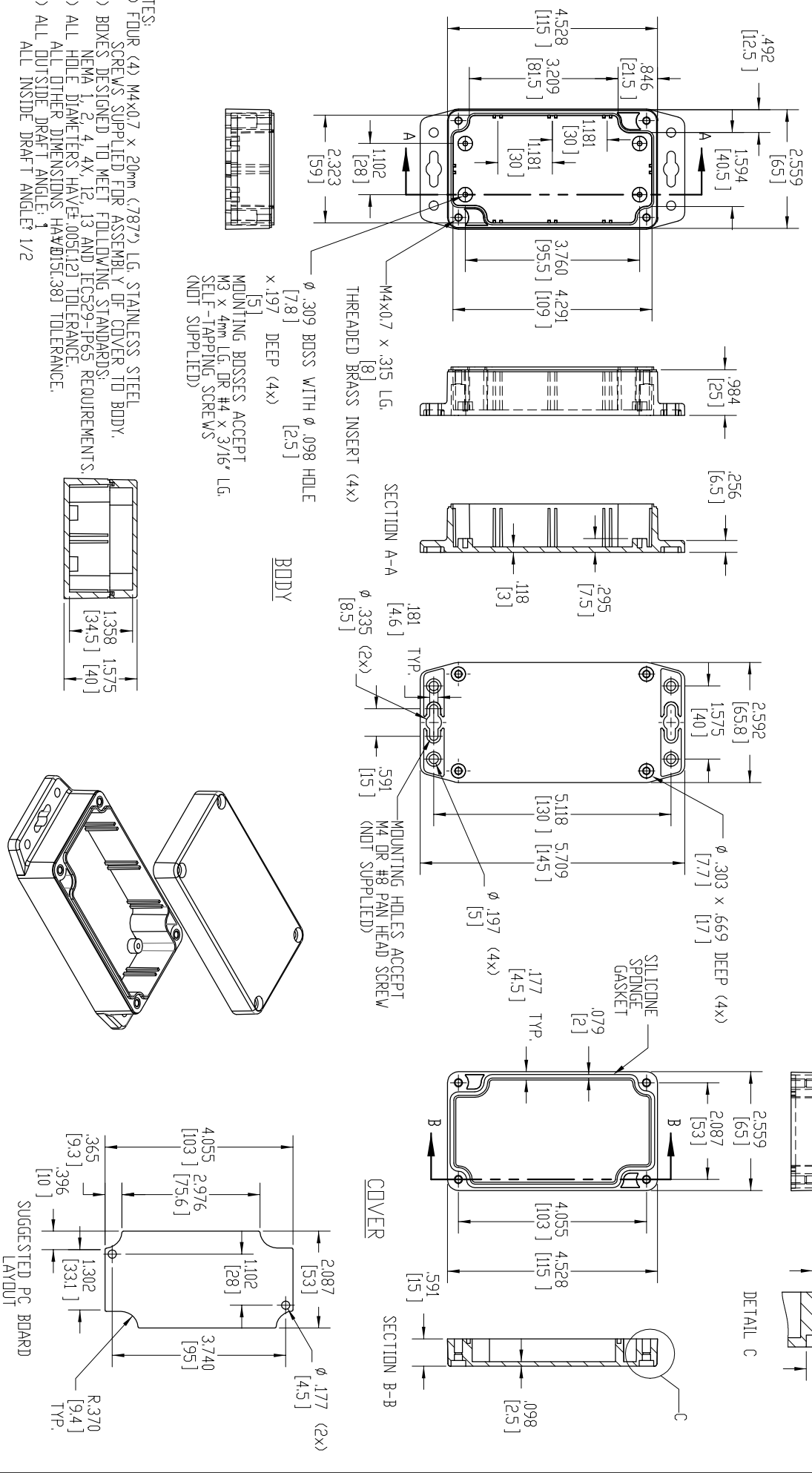


PART NAME	NEMA 4X PLASTIC BDX W/EXTERNAL MTG. BRKT.	PART No.	SEI321-MB	SEI321-CMB	SEI321-DGMB	REVISION DATE	5-26-11
-----------	---	----------	-----------	------------	-------------	---------------	---------

MATERIAL & FINISH:
 (-MB SUFFIX PART NO.) POLYCARBONATE UL 94-HB, UV STABILIZED, SERVICE TEMPERATURE RANGE: *C40D +120 *C, LIGHT GRAY BODY & COVER.
 (-CMB SUFFIX PART NO.) SAME AS -MB EXCEPT CLEAR COVER.
 (-DGMB SUFFIX PART NO.) ABS UL 94-HB, SERVICE TEMPERATURE RANGE: *C40D +80 *C, DARK GRAY BODY & COVER.



- NOTES:
- 1) FOUR (4) M4x0.7 x 20mm (.787") LG. STAINLESS STEEL SCREWS SUPPLIED FOR ASSEMBLY OF COVER TO BODY.
 - 2) BODIES DESIGNED TO MEET FOLLOWING STANDARDS:
NEMA 1, 2, 4, 4X, 12, 13 AND IEC529-IP65 REQUIREMENTS.
 - 3) ALL HOLE DIAMETERS HAVE .005(12) TOLERANCE.
ALL OTHER DIMENSIONS HAVE .015(.38) TOLERANCE.
 - 4) ALL OUTSIDE DRAFT ANGLE: 1/2
ALL INSIDE DRAFT ANGLE: 1/2

M4x0.7 x .315 LG. THREADED BRASS INSERT (4x)
 Ø .309 BOSS WITH Ø .098 HOLE x .197 DEEP (4x)
 MOUNTING BOSSES ACCEPT M3 x 4mm LG. DR #4 x 3/16" LG. SELF-TAPPING SCREWS (NOT SUPPLIED)

BODY

SECTION A-A

Ø .303 x .669 DEEP (4x)
 MOUNTING HOLES ACCEPT M4 DR #8 PAN HEAD SCREW (NOT SUPPLIED)

SILICONE SPONGE GASKET

DETAIL C

COVER

SECTION B-B

SUGGESTED PC BOARD LAYOUT